

Creating and Loading Web Pages to the 5223

7



This tech tip will assist you in creating a web page for a 5223 controller using CT HMI builder and the CT WebHMI2.jar file. The expanded tools available in the 5223 controller are explained in Appendix A.

The 5223 uses the Advanced Version of CT webHMI. The advanced version operates differently than the standard version. Unlike the standard version, the advanced version does not use the export and publish feature of CT HMIBuilder. Instead it uses the CT HMIweb2.jar file to create the downloadable web HMI file needed for the 5223's web server. This program will build the .html file that will be copied over to your 5223 via an FTP session.

Your 5223 should be shipped and ready for a project. Should you ever need to reconfigure your Controller, see the [Flash Disk Management](#) section of this manual.

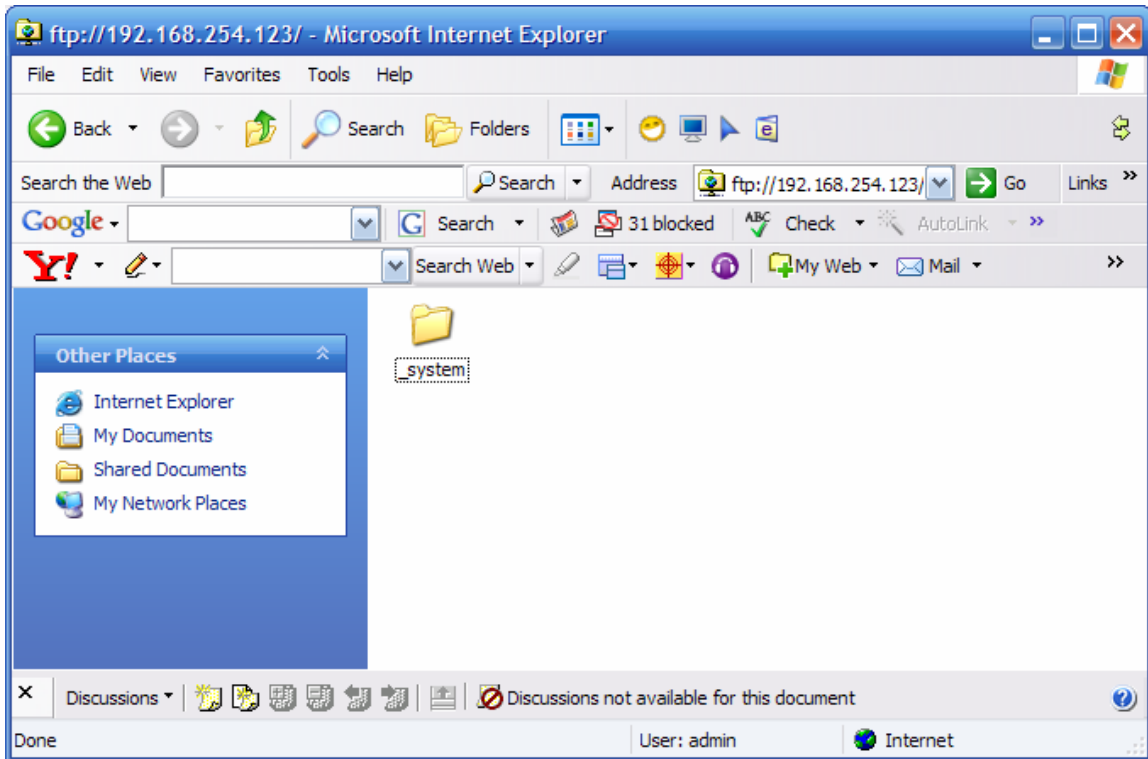
The procedure to create and export the files needed to display web pages from the 5223 will now be discussed.

The first thing you need to do is create an .hmi file using CT HMI Builder just as if you were creating an operator interface for the iPanel Touch Screens. Refer to the CT HMI Builder manual for more information on this. Be sure to check the list of all supported Widgets available for use with CT webHMI in Appendix A of this document.

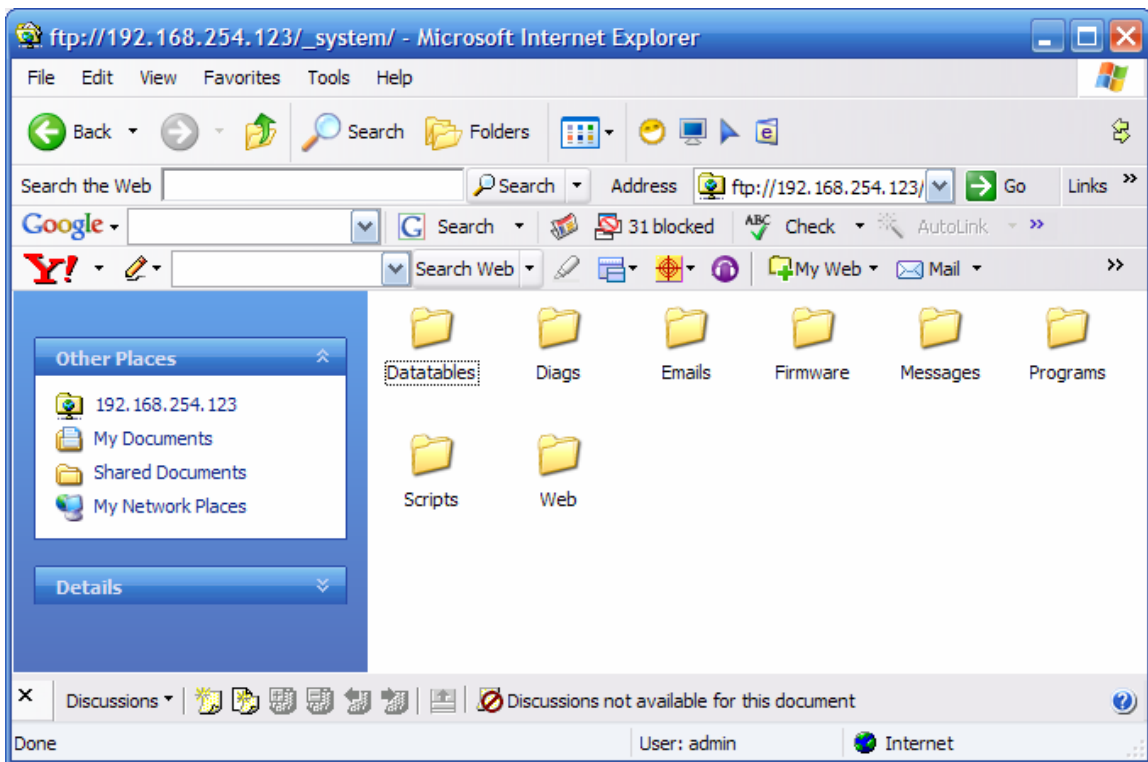
Once you have done this you will have created an .hmi file to be used later. Your controller will contain the CT HMIWeb2.jar file needed to create the .html file, so the next step will be to retrieve this file. You will now FTP into the controller using Internet Explorer (IE). To do this, open IE and type:

```
FTP://admin@xxx.xxx.xxx.xxx
```

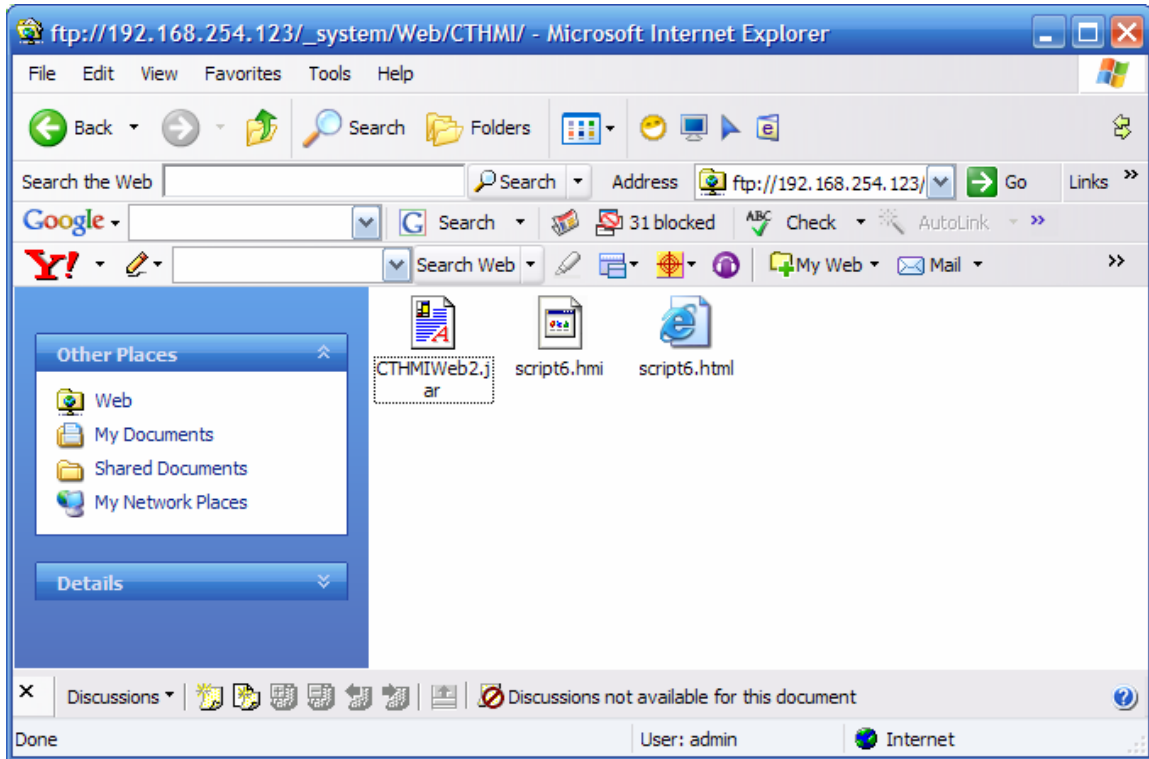
where xxx.xxx.xxx.xxx is the IP Address of your controller. We are using 192.168.254.123 as the controller in this example. The user name will be admin and the password will be BlueFusion unless you have changed the security settings on your controller. After you've logged in your screen should look like this.



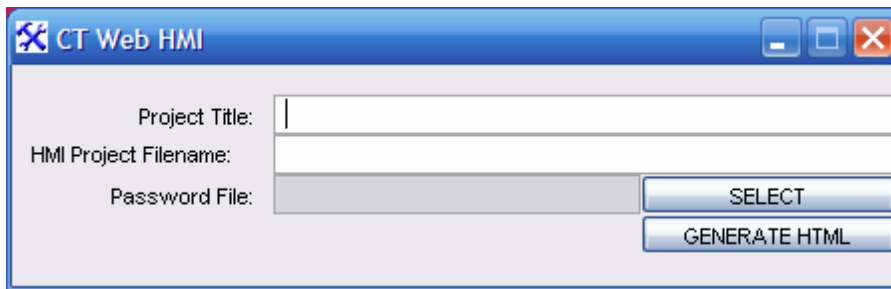
Now double click on the `_system` folder and your screen will look like this.



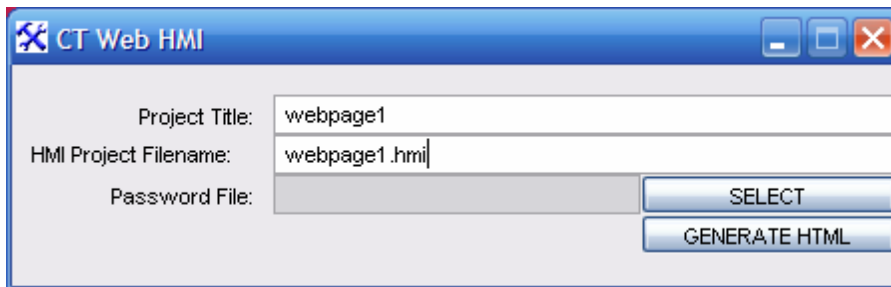
You will double click on the Web folder and then the CTHMI folder after that. Your screen will now look something like this.



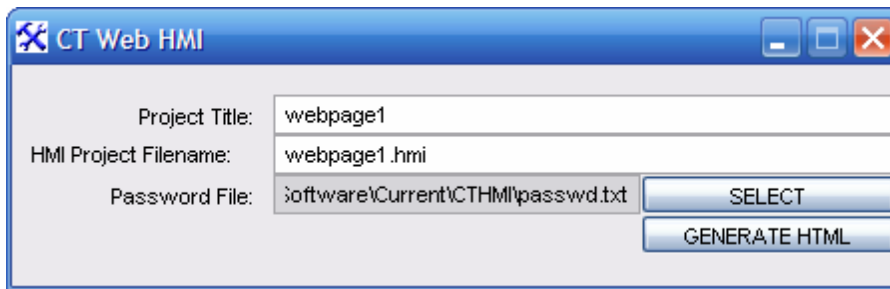
Now you need to copy the CTHMIWeb2 . jar program file to your desktop. Once this is done, you can start the CTHMIWeb2 . jar program, and the following screen will appear.



Enter your Project Title in the box and the .hmi project name as shown in the example below:

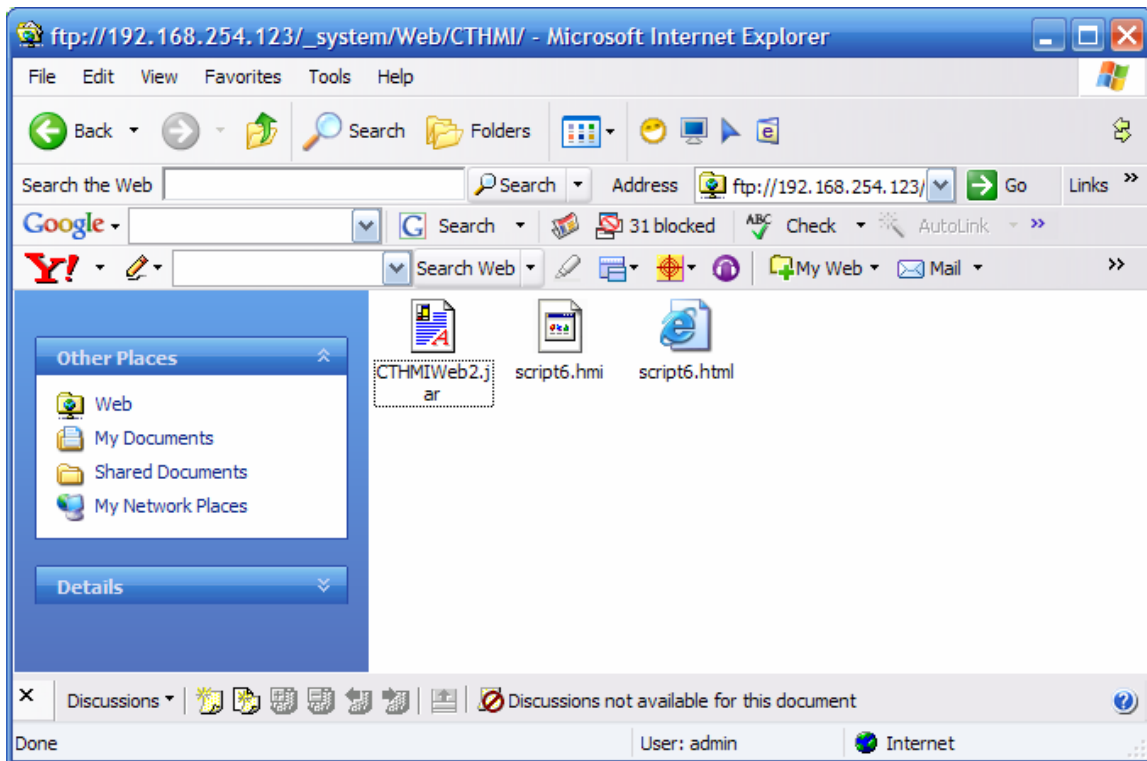


Once this is done, you can enter in the location of your password file, if you are using security levels in your panels (recommended). You do this by clicking **SELECT** to find it on your computer. See the *CTHMI Reference Guide* for information on creating Password files.



Once this is done, click on the **Generate HTML** button and choose a name for this file. Generally you will want to use the same name as the .hmi file, but this is not necessary.

Now you have the HTML file created, you will copy this and the .HMI files to the controller. You will now FTP into the controller using Internet Explorer like you did to retrieve a file earlier.



This controller already has the web page files named `script6` loaded on it, but to load the new web pages simply copy both the .hmi and .html files you created into the same CT HMI directory that you found the CT HMIWeb2.jar file in. Once that is done, you can access the web pages using the following link:

`http://xxx.xxx.xxx.xxx/CTHMI/filename.html`

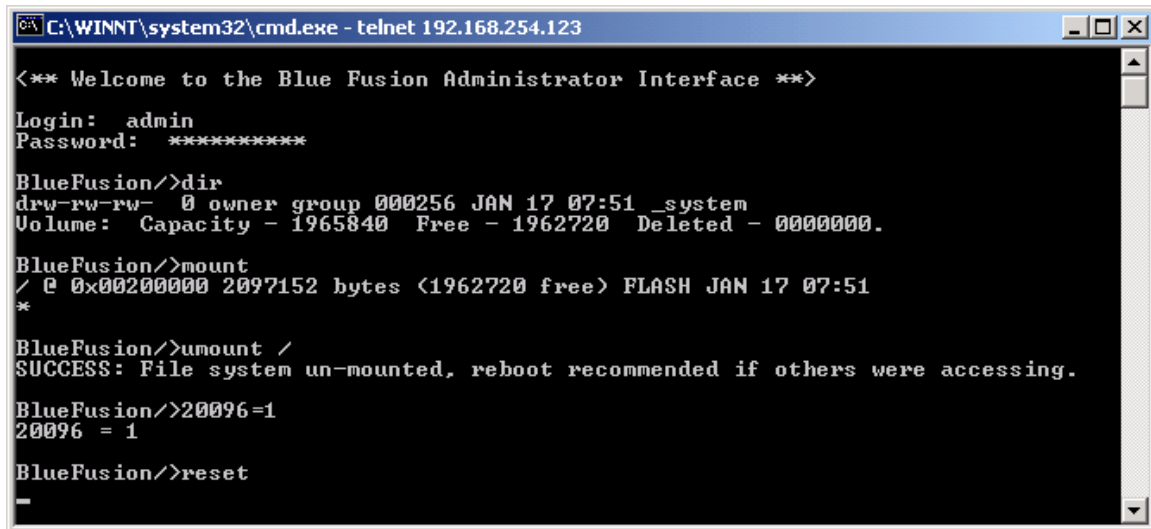
where `xxx.xxx.xxx.xxx` is the IP Address of the controller and `filename` is the name of the html file you created.

For example, to access the web page shown on the controller above you would enter the following in the web address window:

`http://192.168.254.123/CTHMI/script6.hmi`

Flash Disk Management

Should you need to reset your Blue Fusion, the following instructions allow you to set up your Flash Disk to be used with CT WebHMI. The important thing here is that you have enough flash memory “mounted” to the root directory. To do this you would telnet into the controller. The mount controller tells you the current setup of Flash Disk. The `umount /` command unmounts any currently mounted memory. Note that the `20096=1` command saves the Flash memory change, and that changes to the flash may require a reset as shown.



```
C:\WINNT\system32\cmd.exe - telnet 192.168.254.123
<*** Welcome to the Blue Fusion Administrator Interface ***>
Login: admin
Password: *****
BlueFusion/>dir
drw-rw-rw-  0 owner group 000256 JAN 17 07:51 _system
Volume: Capacity - 1965840 Free - 1962720 Deleted - 0000000.
BlueFusion/>mount
/ 0x00200000 2097152 bytes <1962720 free> FLASH JAN 17 07:51
*
BlueFusion/>umount /
SUCCESS: File system un-mounted. reboot recommended if others were accessing.
BlueFusion/>20096=1
20096 = 1
BlueFusion/>reset
-
```

Resetting your controller will cause your telnet connection to be lost. You will need to log back into another telnet session and issue a `mount` command similar to the commands shown below. Note that the `mount` command will depend on the actual available memory setup of your controller, which is determined using the `memory map` command.

Note that the format flash will delete the majority of the files in your system. Make sure you back up all the files in the system directory to your computer via ftp before you do a format flash so that you can copy them back into the controller when you are done.

```
c:\ Telnet 192.168.254.123

<*** Welcome to the Blue Fusion Administrator Interface ***>
Login: admin
Password: *****

BlueFusion/>umount /
SUCCESS: File system un-mounted, reboot recommended if others were accessing.

BlueFusion/>mount 0x03000000 8300000 /
SUCCESS: Mount completed, formatting required if new drive.

BlueFusion/>format flash
Formatting disk...
SUCCESS: Disk formatted successfully.

BlueFusion/>20096 = 1
20096 = 1

BlueFusion/>reset
-
```

Appendix: CT WebHMI features

5200 CT webHMI features

Blue Fusion model no.	5222	5223
CT webHMI version	basic	advanced
Standard flash drive size	5 MB	9 MB
Simple graphics	✓	✓
Labels	✓	✓
User generated graphics	✓	✓
Active display boxes	✓	✓
Interactive switches	✓	✓
Indicator lights	✓	✓
Live video feeds	✓	✓
Interactive meters	✓	✓
Remote data logging	✓	✓
Number of controllers HMI project can access	1	unlimited
Multiple register (block) read	-	✓
String table translator	-	✓
Event scripts	-	✓
Project scripts	-	✓
Recipe manager	-	✓
Dynamic charting	-	✓
Encrypted multi-level security	-	✓
Multi-panel support	-	✓
Animation	-	✓
Multiple language support	-	✓
User logon authentication	-	✓